

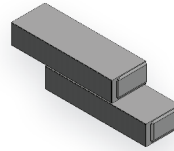
Dorado Wall*



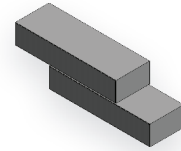
The Dorado Wall is the perfect accompaniment to any modern design with its clean straight lines and rich premium finish face mix. The lineal appearance of the Dorado Wall with its zero setback is unique in a garden wall unit. Installation is simple as there are no pins, lips, or lugs. The Dorado Wall units are adhered to each other using a concrete adhesive attaining a maximum height of 30 inches.

*Patent Pending

Sizes



Standard Unit
8" x 24" x 5"
203mm x 610mm x 127mm
Including 5mm Spacer

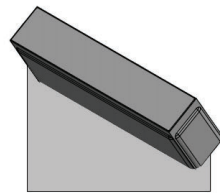


Corner/Coping Unit
8" x 24" x 5"
203mm x 610mm x 127mm
Including 5mm Spacer

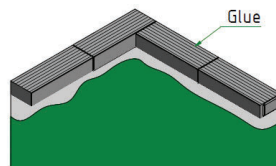
Installation Guidelines

The Dorado Wall is a new contemporary Garden Wall which has a unique integrated spacer design. The walls are built by using 2 different type of blocks:
Standard Unit: has a spacer on the bottom and one side. This block is used throughout the wall except exposed corners and coping.
Corner/Coping Unit: has a spacer only on the bottom of the block and is used for corners and the top layer of the wall.

- 1 Familiarize yourself with the 2 different block types Standard and Corner/Coping unit.
- 2 Dig a base trench 16 inches wide and 6 inches deep. Removing all organic material.
- 3 Compact the trench thoroughly.
- 4 Fill the trench with 4 inches of road base material typically $\frac{3}{4}$ " minus road mulch. Compact thoroughly with your compactor.
- 5 Take your level and ensure the base material is flat and consistent from front to back and side to side. Properly compacted and leveled base will ensure a good wall installation.
- 6 Make sure blocks are always installed with spacers facing down
- 7 On the first course use a string line and level to help with alignment of the Dorado Wall units. The spacer tab that is provided on the bottom and the right side of the unit provides the spacing between the lower course and the next unit on the same row. A perforated drainage pipe is placed in the rear of the wall and sloped toward a catch basin.
- 8 Continue laying courses up to the desired height adhering each row as you go. Typically, each row is half staggered or is on a 1/3 stagger.
- 9 In the excavated area behind the installed wall $\frac{3}{4}$ " clear crush aggregate is used as a drainage medium to remove water from behind the wall.
- 10 At the top of the wall attach the Dorado Wall coping units to cap off the wall. The coping unit is also the corner unit as it is colored in the back of the block and has no spacer. Because there is no side spacer on this unit you will have to manually space it out 5 mm ($\frac{3}{16}$ "). The finished wall height should not exceed 30 inches.



Inside Corner Installation



Outside Corner Installation

